

Nākoloikalani

Mā te Pouako

Ngā Ihirangi

He Maioha 2

He Kōrero Whakapuaki 3

Ngā Mahere Ako

1. Mā Pango, Mā Whero 5

2. Te Piko o te Māhuri 9

3. Hokia ki Ō Maunga 13

4. He Pahu na Ali'i 17

5. Kia Ngākau Māhaki 20

Te Tuaiwi Tikanga ā Iwi 22

He Tāruatanga Matua 24

Kupu Taka 34

He Maioha

*Tēnei ka tū ki te aronga
 Nā ko te toka tītōhea
 Te hiahia, te koronga
 Kia ekea ngā tapuwae a Ngātoro
 Ki te tama a Rangi matua
 Ki te tama a Nuku te whenua
 Piki mai! Piki mai!
 Te matatihi o te rangi
 Kake mai! Kake mai!
 Te tautara o te maunga
 Piki ake! Kake ake!
 Ki te toi matamata,
 Piki ake! Kake ake!
 Ki te keokeonga
 Mānuka ana te toa
 Hei manawa whakatara
 Ki ngā waewae mārōrō
 Ki ngā ringa hītamotamo
 Tō tihi ka riro e toka
 Pūrea ai ki te hau a Tāwhiri
 Maioha atu! Maioha atu!
 Kia mau! Kia ita!
 Ki te taketake a te pikinga e
 Tīhei mauri ora!*

Ki a Rangi Matua, kia Papahurinuku, ki ngā nui o tua mai i te kitenga tangata. Wahia nei ēnei tuhinga ki ngā whakaaro e tika ana ki a koutou. Ngā kaha mai i te rangi, ngā kaha mai i te whenua, tū tonu kia ita.

Otirā, kei te tupuna Nākoloikalani kōrua ko Pelehonumea. He kōrero ora ēnei i tō kōrua wā. Nō reira e whakaaro ana ki a kōrua i te kawenga anō mai o tēnei tuhinga. Kua ora anō ā kōrua kōrero oranga. Nā kōrua te ara tāpokopoko i whakapara hei ara tuku kōrero.

Ka tika rā kia mihia ngā tūpuna nā rātou ēnei kupu i waha mai i ngā tau onamata, kia taea e ēnei whakatupuranga te whāwhā i aua kupu nui whakaharahara. Me he roimata hei tangi, ka riringihia ki ngā mate o ngā iwi o te motu nei o Hawaiki tautau. Otirā, o Hawaiki runga, o Hawaiki raro, o Hawaiki rā anō. Arā, ko rātou mā kei ngā takotoranga maha o aua tini kāinga, takoto ake ai ki te māriretanga o te moenga roa kua whakaritea mō koutou. Kāti, kua ea.

Kei ngā tuākana mai o Hawaiki runga, e kore e mutu te here o te kupu kōrero i a taua i ngā tangata Māori o te Moananui a Kiwa. He kōrero maunga ēnei nō ngā tiketiketa o ngā tuku a ō tātou tūpuna. Kua tuia tātou ki ngā take o ngā maunga. He hau e kawē nei i ngā kōrero mai i tēnā, me tēnā o ngā maunga tapu rā ki ngā maunga tapu nei. E rite ai ki a Ngātoroirangi i karakia atu nā kia riro ai he maunga hū ki raro nei, he maunga hū ki runga nā. E mahana ai te kiri i te rongotanga mai.

Mahalo nui me ke aloha la. He kanaka Hawai'i koe. He tangata whenua au. He kanaka māoli kākou!

Ka rere te manu kōrero ki te take o te maunga, ki ngā puna wai keria, ki reira unumia te wai e kore e mimiti e. E tāpapa ana ki ngā hiwi o te motu ki ngā mata kanohi e rongo mai nei ki ngā kōrero maunga. He maunga tū noa, ngā puke ki uta rā. Otirā, he maunga tapu nō ngā iwi maha.

Ka huri taku aro ki ngā maunga tītōhea nō reira te āwhina mōku. Kia tū ake ai ahau ki te tara kua pākia ki ngā hau kōkōuri a Tāwhirimātea. Kia pūrea ai ki ngā pungawere, arā he whanga hau. Matua te whakaaro, matua te kōrero, matua te kupu e.

Mauri ora ki a tātou.

He Kōrero Whakapuaki

He kaupapa whakawhānui whakaaro tēnei kia mataara ai te ākongā ki tōna ao.

“Te tū tangata o te ākongā i te ao Māori, i te ao whānui hoki.”

I tāngia *He Puia, he Iwi: Nākoloikalani* hei rauemi tautoko i te marautanga Tikanga ā Iwi. He pakiwaitara tēnei e pā ana ki ngā mahi a Nākoloikalani me tana wāhi ki te kawenga mai o te puia i Hawai‘i ki Aokealoha nei.

I titoa te kōrero o *Nākoloikalani* e ngā uri o Ngāi Pele ki Hawai‘i. Ko te takenga mai o te puia a Pelehonuamea, me tōna tuku mai ki a tātou te kaupapa nui. Ko te tātai hono a Nākoloikalani ki te whānau ahi nei tōna whakaoranga mai.

Mā ngā ākongā i roto i ngā akomanga reo Māori te pukapuka *Nākoloikalani*. Ko te hihiri i te mahara o te ākongā tōna tikanga, kia ruku hōhonu ia ki Te Waiora a Tane-i-te-Wānanga. Mā ngā pouako i roto i ngā akomanga reo Māori *Nākoloikalani, Mā te Pouako*. Ko te tūmanako ia, he āwhina tēnei pukapuka i taua hunga e whakapau kaha ana ki te whakaako mai i te reo Māori anake.

Kua whakaputaina tētahi kōpae rorohiko me te pae Ipurangi www.tki.org.nz/r/maori/puia/ hei rauemi tautoko. Kei konei e pupuri ana:

- *Mā te Pouako* hei tukutukunga;
- he kohinga whakaahua;
- he kupu ārahi kei te uwhi o te kōpae me te whārangi āwhina o te pae Ipurangi;
- te pakiwaitara me ana mōhiohio anō hei raweketanga.

Ko ngā tukanga e toru me ngā whenu e rima mai anō i te marautanga Tikanga ā Iwi te tūāpapa o ngā akoranga. Kei ngā taumata 3–4 ngā whāinga paetae i tīpakohia i roto i ngā Hei Mahi.

Hei kōrero whakamutunga ēnei, nā Te Whatahoro:

“Kāore i kotahi te whakahaere o ngā tikanga ā iwi. He iwi anō me ōna tohunga me ōna tikanga me āna whakahaere. Hiki atu he iwi, pērā tonu. Nō reira, kia mau koe ki ōu ake. Waiho atu tō ētahi atu. Mā ō rātou uri e mau ō rātou nā kōrero. Engari kia mau koe ki ngā kōrero o ōu matua, o ōu tūpuna. Ina ka tika mai, ka waiho mai ētahi mātauranga hei taonga mōu.”

Mahere Ako 1

Mā pango, mā whero ka oti te mahi

Ka tirohia ngā tūranga me ngā *haepapa* o te tangata i roto i ana mahi whakatutuki kaupapa nui.

Ka hiahiatia

he pepa mārō	he paraihe tā
he kutikuti	he kāpia
he kōpaki	he peita (kia ‘mahana’ ngā tae)
he pepa nui	he tāruatanga matua 1A, 1E, 1H
he pene hinu, pene whītau rānei	
<i>Nākoloikalani</i> , nā Kekuhi Kanahēle & Kaipo Frias	

Hei Mahi 1

Ka akohia ngā kōrero whakapapa o Pelehonuamea. He mahi takirua tēnei. He 2–2 1/2 haora te roa o te mahi.

- Tāruatia te tāruatanga matua 1A (whārangi 24) ki runga pepa mārō. Tapahia ngā kāri, ka rau atu ki roto ki ngā kōpaki, kotahi te kōpaki mā ia tokorua.
- Pānuihia atu e te pouako ngā whiti 8–12 o te kōrero *Nākoloikalani*. Ko te aronga nui o tēnei wāhanga o te kōrero, ko wai mā te whānau o Pele.
- Mā ngā tokorua ngā kāri ingoa e whakaraupapa kia tika.
- Ka whiriwhiria hoki me he ingoa tāne, he ingoa wahine rānei, ā, i whānau mai i tēhea wāhanga o te tinana o tō rātou whaea, o Haumea.
- Ka tāngia te āhua o tētahi ākongā e takoto ana ki tētahi pepa nui. Ka peitahia ki ngā tae o te whenua. Ko te āhua o Haumea tērā.
- Ka tāpirihia ngā ingoa whakapapa ki te wāhanga o te tinana e tika ana (arā, ko te wāhi i puta mai ai taua tamaiti).
- Ka tāpirihia ngā ingoa whakapapa ki te wāhanga o te tinana i puta mai ai taua tamaiti. Kia mahara, kāore te wāhi i puta mai ai a Kāne‘āpua i kitea.

Hei Mahi 2

Ka matapakia ngā **rautaki** whakatutuki kaupapa **pāpori**. Ka āta tirohia ngā tūranga me ngā haepapa a tēnā, a tēnā. He mahi takirua anō tēnei. He 2 haora te roa o te mahi.

- Pānuhia e ngā ākonga ngā whiti 8–12 o te kōrero *Nākoloikalani*.
- Tāruatia te tāruatanga matua 1E (whārangi 25) kia kotahi te whārangi mā ngā ākonga tokorua. Tapahia ngā whārangi. Raua ki roto ki ngā kōpaki, tēnā ka tohaina.
- Ko tā te tokorua, he hono i te kaimahi ki tana mahi āwhina tika me ana haepapa hoki.
- Matapakia te kaupapa i wānangahia i Keanakū. Anei ētahi pātai me ētahi tauira whakautu hei ārahitanga kōrero.

1. He aha te take i hui tahi ai rātou i te ana o Keanakū?

I runga o Tongariro maunga a Nākoloikalani e mate haere ana i te anu, i te mātao. I karanga ia ki ōna tuāhine, ki a 'Uīwai rāua ko Haunaloa kia tukuna te ahi hei whakamahana i a ia. Ka tono ngā tuāhine ki a Pele i Hawai'i māna rāua e āwhina. Ka karangahia e Pele rātou ko ētahi atu ki Keanakū ki te whakarite i ngā āhuatanga e tika ana.

2. Kāore a Pele i kōrero hāngai ki a 'Uīwai rāua ko Haunaloa. He aha i pērā ai?

He tino tapu a Pele. E ai ki ō rātou tikanga, ko Hī'iakaikapoliopole rāua ko Kāne'āpua anake e āhei te whakaoho i a Pele i tana moe. Ko Kāne'āpua hoki te māngai o Pele.

3. Ko wai mā rātou i huri ki te tautoko i a 'Uīwai rāua ko Haunaloa?

Ko Pele te kaiwhakahaere, te kaitohutohu.

Ko Kāne'āpua, tētahi o ngā tungāne o Pele, ko ia hoki te māngai o Pele.

Ko Kamohoali'i, he tungāne anō nō Pele, ko ia te mātāmua o te whānau.

Ko Hī'iakaikapoliopole, te teina o Pele, ko ia hoki te pōtiki.

Ko Kapō'ulakīna'u, he teina anō nō Pele.

Ko Haumea te whāea o Pele.

Ko Pu'ulena te hau pungatara o Puna.

Ko Kapō-wahine-o-ka-malama (Uli), te wairua o te pō.

4. He aha ngā take i hiahia ai rātou ki te āwhina?

I tahuri ai rātou ki te āwhina nā te whanaungatanga i waenganui i a rātou.

5. Nā wai tēnei mahi, nā wai tēnā mahi i pīkau kia tutuki ai te kaupapa?

Ko tā 'Uīwai rāua ko Haunaloa, he huri ki ō rāua āhua wairua – ki a Kahoaka, ki a Kapupū. I kawea e rāua te ahi puia me te waiariki ki Aokealoo.

Ko tā Kamohoali'i, he ārahi i te tira i te moana. Ko tōna āhua he mako. Ko tāna hoki, he karanga atu ki a Pu'ulena kia tau mai i te wā e tika ana.

Ko tā Hī'iakaikapoliopole, he pupuri tonu i a Tama-nui-te-rā tae noa ki te wā kua hono tahi anō te wairua me te tinana o Nākoloikalani.

Ko tā Kapō'ulakīna'u, he rūrū i ōna parirau o te pō e tīmata ai ngā mahi wairua ki te whakaora anō i a Nākoloikalani.

Ko tā Pu'ulena, he hiki i te tinana ngoikore o Nākoloikalani, ka whakatakoto ki roto i ngā wai mahana o 'Ekeahi.

Ko tā Haumea, he whakaora anō i a Nākoloikalani mā ōna waimiria.

Ko tā Kapō-wahine-o-ka-malama (Uli) he tuku kia whānau mai te awatea.

Hei Mahi 3

Ka whakaritea e ngā ākonga tētahi pō whakaaturanga e tae atu ana ngā whānau ki te kura kia kitea ngā hua mai i ngā akoranga o Nākoloikalani. He whakatinana i ngā āhuetanga o te whakarite pāpori te tikanga. He mahi ā-akomanga tēnei. He 2–3 haora te roa o te mahi.

- Whakatakotohia ngā whāinga o te mahi nei. Kua oti kē i te pouako te whiriwhiri i te rā, te wā, te wāhi me te hōtaka.
 1. Kia tū tētahi pō whakaatu i ngā kōrero o Nākoloikalani.
 2. Mā ngā ākonga te pō e whakarite.
 3. Me whai wāhi ia ākonga i roto i ngā mahi whakariterite.
 4. Me tutuki ngā *paearu* i whakaritea e te pouako.
- Wehewehea ngā ākonga kia 3–5 ki ia rōpū. Tāruatia te tāruatanga matua 1H (whārangi 26) tohaina ki ia rōpū.
- Me oti i a rātou te whakarite:
 - Te hōtaka mō te pō, tae noa atu ki te kaiwhakahaere o te pō;
 - te tuku pānui ki ngā mātua me te noho takawaenga i te hapori o te kura;
 - te taha ki te manaaki i ngā manuhiri o te pō;
 - te wāhi noho me te wāhi whakaaturanga;
 - ngā taputapu katoa e hiahiatia ana, tae noa ki ngā taonga paoho me ngā rama;
 - te whakapai i te wāhi i muri mai o te whakaaturanga.

He Aromatawai

Kua akohia te whakapapa o Pelehonuamea nō te pukapuka *Holo Mai Pele*.

Kua wānanga i ngā āhuetanga whakahaere kaupapa kia tutuki ai.

Kua whakarite ngā ākonga i a rātou anō ki te whakatutuki kaupapa nui.

Kua whakatinanahia e ngā ākonga ētahi āhuetanga whakakī tūranga, kawe haepapa hoki.

He Rauemi

Nākoloikalani

Kekuhi Kanahēle & Kaipo Frias, H.A.N.A. Ltd. (2004)

Pele, Goddess of Hawai'i's Volcanoes

H. K. Kane, Kawainui Press (1987), 9th Edition (2000)

Mahere Ako 2

Te piko o te māhuri, tērā te tupu o te rākau

Ka kawea e te *meleoli* te reo tuku iho ki te taringa. Ka kawea e te *hula* te reo tuku iho ki te mata. Ka kawea e te *ōlelo no'ēau* te reo tuku iho ki te hinengaro. Ka ora ko te wairua.

Ka hiahiatia

Nākoloikalani, nā Kekuhi Kanahēle & Kaipo Frias
He Puia, he Iwi – te kōpae puoro/rorohiko
he tāruatanga matua 2A, 2E

Hei Mahi 1

Ka akohia te meleoli a *Eō*, 'O *Pele-honua-mea* nā Kamiki i tito. He mahi ā-akomanga tēnei. He 1 1/2 haora te roa o te mahi.

- Pānuihia te meleoli *Eō*, 'O *Pele-honua-mea* kei te tāruatanga matua 2A (whārangi 27).
- Whakatangihia te meleoli *Eō*, 'O *Pele-honua-mea* kei te kōpae puoro, *He Puia, he Iwi*.
- Tāruatia te tāruatanga matua 2A (whārangi 27). Tapahia ngā rārangi o te meleoli. Hoatu tētahi rārangi rerekē ki ia rōpū rerekē.
- I roto i ngā rōpū iti, me whakarongo anō ngā ākongā ki te meleoli, ā, me mau ki tā rātou ake rārangi o te meleoli, ā-hinengaro, ā-taringa hoki.
- Whakawāteangia te kōpae puoro kia taea e tēnā rōpū, e tēnā rōpū tōna wāhanga te whakawai i roto i te kotahi wiki e whai muri mai.
- Kia taea e ngā rōpū te meleoli te waiata (ahakoa he wāhanga anō kei tēnā, kei tēnā), ka huri rātou ki te ako ngātahi ki te waiata i te meleoli katoa.

Hei Mahi 2

Ka hangaia tētahi taonga puoro. E whai ana te taonga nei i te tauira o tētahi e whakatangihia ana i te wā e hula ana ngā iwi o Hawai'i. Ko te *ipu heke* tērā. Tāruatia te tāruatanga matua 2E (whārangi 28), ā, tohaina kia kotahi ki ia ākongā. Kohia ngā taputapu, me whai hoki i ngā tohutohu. He 1 wiki te roa o te mahi.

- Ina mutu te ipu heke te hanga, ka tahuri ki te rangahau kōrero mō ngā taonga puoro o Hawai'i. Tēnā rangahaua ngā mea o neherā (te pahū), o ēnei rangi hoki (te ukalele).
- Ka āta rangahaua ngā matū, te hanga, ā, me pēhea te whakatangi i tētahi o ēnei taonga puoro.

Hei Mahi 3

Ka akohia ētahi whakataukī nō Hawai‘i. Ka huri ki te rapu ko ēhea o ā tātou whakataukī e āhua rite ana ki ēnei. He tirohanga whakataurite he aha ngā uara e mau nei i roto i ngā kōrero tuku iho a ngā iwi e rua. He mahi takirua, he mahi ā-rōpū anō tēnei. He 1 1/2 haora te roa o te mahi.

- Tāruatia te tāruatanga matua 2H (whārangi 29) kia kotahi te whārangi mā ngā ākongā tokorua.
- Tapahia hei kāri kia raua ki roto ki ngā kōpaki, kātahi ka toha ki ngā tokorua.
- Mā ngā ākongā ngā whakamāoritanga e hono ki ngā ōlelo no‘eau o Hawai‘i.
- Tohaina kia kotahi te whakataukī rerekē ki ia rōpū. Mā tēnā rōpū, mā tēnā rōpū te whakataukī e āta rangahau kia taea e rātou te whakamārama mai ki te akomanga.
- Mā ngā rōpū anō tētahi whakataukī Māori e taurite ana ki te mea o Hawai‘i e rapu.
- Mā te pouako ētahi pukapuka e whakaemi hei rauemi tautoko i te mahi.

E whai ana ētahi whakataukī Māori hei tīmatanga. Rapua ngā whakamāramatanga. Whiriwhiria ko te rite ēnei ki ēhea o ngā ‘ōlelo no‘eau.

Kia kī te rourou iti a Haere.

Nāu te rourou, nāku te rourou, ka ora ai te iwi.

Ka wera hoki te ahi, e mana ana anō.

Ko Papatūānuku te matua o te tangata.

Me he manu e kakapa.

Me te paihau turuki.

Nōku te tūranga, nō koutou te mana.

Waiho mā te tangata e mihi.

He Aromatawai

Kua akohia te *mita*, te *tangi*, te *oro* me ngā kupu o tētahi meleoli.

Kua hangaia tētahi taonga puoro o Hawai‘i.

Kua rangahaua ngā kōrero e pā ana ki ngā taonga puoro o Hawai‘i.

Ka akohia ngā ōlelo no‘eau o Hawai‘i me te whakataurite ki ngā whakataukī Māori.

He Rauemi

Nākoloikalani

Kekuhi Kanahale & Kaipo Frias, H.A.N.A. Ltd. (2004)

‘Ōlelo No‘eau – Hawaiian Proverbs & Poetical Sayings
Mary Kawena Pukui, Bishop Museum Press, Honolulu, Hawai‘i (1983)

Ngā Pepeha a ngā Tūpuna

Hirini Moko Mead & Neil Grove, Victoria University Press (2001)

Māori Proverbs

A.E. Brougham & A.W. Reed, nā T.S. Kāretu i whakahoua, Heinemann Reed (1987)

Mahere Ako 3

Hokia ki ō maunga, kia purea ai koe e ngā hau o Tāwhirimātea

Ka āta tirohia te maunga me tōna mana ki ngā iwi e noho nei i tōna taiao.

Ka hiahiatia

he tāruatanga matua 3

he rorohiko me te hono Ipurangi

Nākoloikalani, nā Kekuhi Kanahēle & Kaipo Frias

Hei Mahi 1

Ka āta rangahaua e ngā ākongā ngā kōrero mō ō rātou ake maunga. He mahi takitahi tēnei. He 1–2 wiki te roa o te mahi.

- Kia tutuki pai ai te mahi ka rangahaua ngā tino āhuatanga nei:
 - Te ingoa o te maunga;
 - he whakaahua o te maunga;
 - he pepeha.
 - He kōrero o mua: He pakiwaitara, he hītori, he waiata, he whakapapa, he karakia rānei.
 - He kōrero e pā ana ki tētahi tupuna rongonui.
- Anei ngā kōwhiringa e whā hei huarahi whakatutuki i te mahi rangahau maunga nei. Whiriwhiria kia kotahi, kia rua rānei ngā huarahi.

He haerenga

- Ka hoki te ākongā ki tōna wā kāinga i te taha o tōna ake whānau.
- Ka whakatapua pea he wā kura mō te haerenga, he wā hararei rānei – kia toru rā pea te roa.
- Ka whakaaro ko wai mā i te wā kāinga hei uiui, ā, ka whakapā atu mā te waea, mā te tuhi reta rānei.
- Ka whakarite i te wāhi noho, i te taha pūtea, i ngā taputapu hei haringa atu (he kāmera, he mīhini hopu reo ētahi).
- Ka whakarite koha kia mihia te hunga e takoha mai ana i ngā kōrero.

He rangahau pukapuka

- Ko ngā whare pukapuka o te kura, o te tāone hoki ētahi wāhi e kitea ai ngā pitopito kōrero.
- Ko ngā meneti Kōti Whenua Māori o ia rohe tētahi rauemi pai.
- Kei te kāinga tonu pea o ngā ākongā ētahi pukapuka.
- Mā te pouako anō ētahi pukapuka e whakaemi hei pānuitanga mā ngā ākongā. Ko ngā pukapuka ā-iwi ētahi (a *Tūwharetoa* mā), ko *Ngā Tāngata Taumata Rau*, ko *He Kōrero Pūrākau mō ngā Taunahanahatanga a ngā Tūpuna* anō ētahi.

He toro whanaunga

- Ka whakarite kia haere ki te rapu kōrero – ko te wāhi, ko te wā e pai ana ki te kaikōrero.
- Ka pātai mehemea ka whakaae ia kia hopukina ngā kōrero ki runga mīhini.
- Ka pātai mehemea he whakaahua āna hei tārua māu.
- Ka hari kai, ka hari taonga atu hei koha mā te kaikōrero.

He tiro tiro i te Ipurangi

- Ka whakarite wā e hono ana ki te Ipurangi.
- Ka whakawhiti ki te Ipurangi-ā-kura (Intranet).
- Ka tāngia ngā kōrero ki te pūrere tā.
- Mā te pouako anō e whakarite ētahi wāhi Ipurangi hāngai.

Kia oti pai ngā mahi rangahau a te ākongā:

- Ka tuhia te pūrongo ki runga pepa A4.
- Ka tū ki te whakaatu, ki te kōrero hoki i tana pūrongo ki te akomanga. Kia 10–15 meneti te roa o ia pūrongo.
- Ka whiriwhiria e te akomanga ngā pūrongo papai rawa (kia 2–5 pea ngā pūrongo) hei whakaaturanga ki ngā mātua i te pō whakaatu kei te whakaritea.
- Ka mutu katoa ēnei mahi, ka whakapukapukangia ngā pūrongo hei rauemi hou.

Hei Mahi 2

Ka tā pikitia ngā ākongā o Pelehonuamea e whakaatu ana i ōna āhuetanga. Ko tētahi wāhanga o te mahi nei, he mahi rapu mōhiōhiō i te Ipurangi. Nō reira, me āta titiro e te pouako ngā pae Ipurangi i te tuatahi. He mahi takitahi tēnei. He 2 haora te roa o te mahi.

- Tirohia ngā āhuetanga o Pele kei te pukapuka *Nākoloikalani*.
- Tirohia ngā whakaahua puia o Hawai'i me ngā whakaahua *rangitoto* kei te kōpae rorohiko *He Puia, he Iwi*.
- Tirohia ēnei pae Ipurangi me ngā whakaahua o Pele, nā Herb Kane i tā.

www.volcanostore.com/pages/kanecards.html

www.hawaiiantrading.com/herb-Kane/pele-dreaming/index.html

www.hawaiiantrading.com/herb-Kane/book-pele.html

- Pānuhia te pukapuka a Herb Kane – *Pele, Goddess of Hawai'i's Volcanoes*.
- Ka tahuri ngā ākongā ki te tā pikitia o Pele. Mā te pouako anō te pūkenga toi e whiriwhiri mō te waihanga i ngā pikitia.

Hei Mahi 3

Ka hangaia, ka whakapahūngia anō he puia. He mahi ā-rōpū tēnei. He 2 haora te roa o te mahi.

- Kei te tāruatanga matua 3 (whārangi 30) ngā mea ka hiahiatia me ngā tohutohu hanga puia, *whakapahū* puia hoki.
- Ka oti ngā mahi, ka whakapahūngia ngā puia.

He Aromatawai

Kua rangahaua ngā kōrero, kua tuhia he pūrongo e pā ana ki ō rātou ake maunga.

Kua tū ki te whakaatu, ki te kōrero i ngā hua i puta mai i ā rātou mahi rangahau maunga.

Kua tāia he pikitia mō Pele me ōna āhuetanga puia.

Kua hangaia tētahi tauira puia, ā, kua oti pai te whakapahū.

He Rauemi

Nākoloikalani

Kekuhi Kanahale & Kaipo Frias, H.A.N.A. Ltd. (2004)

Pele, Goddess of Hawai'i's Volcanoes

H.K. Kane, Kawainui Press (1987), 9th Editon (2000)

Ngā Tāngata Taumata Rau

Te Tari Taiwhenua (1991)

He Kōrero Pūrākau mō ngā Taunahanahatanga a ngā Tūpuna

N.Z. Geographic Board (1990)

Mahere Ako 4

He pahu na Ali'i, a pā 'ia kani

Ka tūhuratia e te ākongā ngā wahi puia. Ko ngā puia ora o Hawai'i ētahi, ko Tarawera anō tētahi.

Ka hiahia

he tāruatanga matua 4A, 4E, 4H

he rorohiko me te hono Ipurangi

He Puia, he Iwi – te kōpae rorohiko

Nākolokalani, nā Kekuhi Kanahēle & Kaipō Frias

Hei Mahi 1

Ka matapakia ngā *urupare* a te tangata ki tēnei mea te *mōrearea* i ngā rā o mua, ināiane hoki. He mahi ā-rōpū tēnei. He 1 1/2 haora te roa o te mahi.

- Tāruatia te tāruatanga matua 4A (whārangi 31) kia riro i ia ākongā tētahi. He *whārangi meka* tēnei e pā ana ki ngā puia o Hawai'i.
- Kua tuhia ētahi take mōrearea ka puta mai i te pahūtanga o ngā puia i Hawai'i. Whakaarohia hoki te wā e *pahū* ana ngā puia me ngā āhuetanga kei runga i ngā tāngata e noho ana i reira i aua wā.
- Tēnā matapakia e koutou ngā rautaki me ngā urupare e taea ana.

He pahū puia i te tau 1950

Kei Kalapana tō kāinga. Ka *kupere* mai te awa totorewa i te kōwhao o Pu'u 'Ō'ō i Kīlauea.

- Ko koe te pakeke o te whānau. Māu tō whānau e ārahi kia ora ai rātou i tēnei aituā.
- Tuhia mai ngā tohutohu ārahi i tō whānau.

He rū whenua i te tau 2003

He tamaiti koe e noho ana ki Punalu'u i te taha o tō whānau. He maha ngā rū whenua ki tēnā rohe. Kei te mōhio hoki koutou, ina rū nui te whenua, ākene pea ka pahū mai a Mauna Loa, a Kīlauea rānei.

- Ki ō whakaaro, me aha koutou ina rū nui te whenua, ina pahū hoki ngā puia?
- Tuhia mai ō whakaaro me pēhea koutou ko tō whānau.

Te tai-āniwhaniwha

Kua pahū mai a Kīlauea, ā, kei Pāpa'aloa tō kainga. Kua whai mai te *tai-āniwhaniwha* i te pahūtanga. I te tau 1946 i mate te 46 tāngata i te tai-āniwhaniwha.

- He aha ā koutou mahi urupare i te āhuetanga kino nei?

Hei āwhina, tirohia ēnei pae Ipurangi:

www.geo.mtu.edu/volcanoes/hazards/primer/move.html

www.hvo.wr.usgs.gov/hazards/oceanentry/

Hei Mahi 2

He whakapakari i ngā pūkenga pānui mahere, i ngā pūkenga whakawhitiwhiti kōrero hoki. He mahi ā-rōpū tēnei. He 1 haora te roa o te mahi.

- Tāruatia te tāruatanga matua 4E (whārangi 32) kia kotahi te whārangi mā ngā ākongā tokorua.
- Ka pānuihia e tētahi o te tokorua te tau tohu wāhi, ā, ka rapua e tērā atu te wāhi e hiahia ana.
- He maha ngā kēmu e taea ana i konei. Anei ētahi:
 - Tirangohia ngā pū o te ingoa wāhi i te tuatahi, kia uaua ake.
 - Whakaritea tētahi whakataetae, kia kitea ko wai te tokorua tere rawa ki te rapu i ngā wāhi.
 - Tuhia tētahi pakiwaitara kei roto nei tētahi o ngā wāhi nei. Pānuihia te pakiwaitara ki te akomanga, mā rātou e tohu ki runga mahere ngā wāhi ka kōrerohia (me te whakaraupapa tika anō).

Hei Mahi 3

Ka rangahaua ngā kōrero mō te pahūtanga o Tarawera. He 1 1/2 haora te roa o te mahi.

- Me āta rangahau kōrero te ākonga e pā ana ki te pahūtanga o Tarawera i te 10 o Pipiri 1886. Kia pānuhia e te ākonga te whārangi meka e tāpiri atu nei.
- Tāruatia te tāruatanga matua 4H (whārangi 32), ka toha ki ngā ākonga.
- Whakautua ngā pātai nei:
 1. Ko wai te iwi e noho ana i Tarawera i taua wā?
 2. He aha ngā tohu i puta mai i mua i te pahūtanga o Tarawera?
 3. Tokohia ngā tāngata i mate i te pahūtanga rā?
 4. Mai i ngā kōrero kua pānuhia, whiriwhiria e koe tētahi tangata. Mehemea ko koe taua tangata rā, he aha ō whakaaro, ō kitenga rānei. Tuhia ō kōrero anō nei he reta ki tētahi atu.
- He pae Ipurangi ēnei hei wāhi rangahau anō i te pahūtanga mai o Tarawera.

www.volcanoworld.org/vwdocs/volc_images/img_tarawera.html

<http://library.christchurch.org.nz/Childrens/NZDisasters/MtTarawera.asp>

www.gns.cri

He Aromatawai

Kua mārama te ākonga ki ngā pānga o te taiao ki te tangata.

Kua akohia me pēhea te whai haere i ngā tohu pānui mahere whenua.

Kua rangahau kōrero mō ngā puia i Hawai'i, i Aotearoa hoki.

He Rauemi

Nākoloikalani

Kekuhi Kanahale & Kaipo Frias, H.A.N.A. Ltd. (2004)

Mahere Ako 5

Kia ngākau māhaki

Ka rangahaua, ka wānangahia hoki ngā āhuratanga e pā ana ki tēnei mahi te *heke ngaru*, mai i mua tae mai ki ināiane. He mahinga ohaoha te heke ngaru ki Hawai'i, nā te mea ko te heke ngaru tētahi hākinakina rongonui puta noa i te ao, ā, kāore i kō mai, i kō atu i ngā ngaru o Hawai'i.

Ka hiahiatia

he rorohiko me te hono Ipurangi

he tāruatanga matua 5A, 5E

Nākoloikalani, nā Kekuhi Kanahale & Kaipo Frias

Hei Mahi 1

Ka tirohia ētahi whakataukī e kōrero ana mō tēnei mea te heke ngaru. He mahi takitahi tēnei. He 1 haora te roa o te mahi.

- Ka pānuhia ngā whakataukī e toru.
 - He 'o 'ia ka mea hāwāwā e ka he'e nalu.
 - He kai he'e nalu ko Kahaloa.
 - 'Awili ka nalu. He nalu kapu kai na ke akua.
- Ka huri ngā ākonga ki te whakamāori i ngā whakataukī nei. Anei ētahi tikanga whakawhiti reo mai i te *ōlelo Hawai'i* ki te reo Māori:
 - Hurihia te pū **k** ki te **t**
Hei tauira: kai (ōlelo Hawai'i) = tai (reo Māori)
 - Hurihia te pū **l** ki te **r**
Hei tauira: nalu (ōlelo Hawai'i) = n(g)aru (reo Māori)
 - Hurihia te tohu ' ki te **k**
Hei tauira: he'e (ōlelo Hawai'i) = heke (reo Māori)
- He aha pea ngā whakamāramatanga o ngā whakataukī nei?
- Tirohia te tāruatanga matua 5A (whārangi 33) hei āwhina i a koe.

Hei Mahi 2

Ka rangahaua ā-rōpū ngā kōrero e pā ana ki te heke ngaru ki Hawai'i i ngā rā o mua. Kātahi ka whakaritea tētahi whakaaturanga i ngā kōrero kua whakaemia mō te kaupapa nei. He mahi ā-rōpū tēnei. He 1 wiki te roa o te mahi.

- Tirohia ngā pae Ipurangi e rārangi iho nei mō te hītori o te heke ngaru i Hawai'i. Tāia ngā kōrero hāngai me ngā whakaahua hāngai.
 - www.surfart.com/surf_history/kings/html
 - www.surfart.com/surf_history/abolish/html
 - www.legendarysurfers.com
 - www.soul-surfer.com/surfing-history.html
- Whakautua ēnei pātai:
 1. Ko wai mā rātou i *he'e nalu* i Hawai'i i mua o te taenga ake o Kāpene Kuki?
 2. He aha te take i tata whakamutua rawatia te heke ngaru ki Hawai'i i taua wā?
- Whakaritea tētahi whakaaturanga:
 1. Tuhia ētahi kōwae kōrero hāngai.
 2. Tāia ētahi whakaahua mai te Ipurangi hei tautoko i ngā kōrero.
 3. Whakapiria ēnei ki tētahi pepa nui, whakaritea rānei hei **Whakaaturanga Pūmanawa**.

Hei Mahi 3

Ka haere tonu ngā rangahau. Ināianei, ka rapu kōrero mō te pikitanga ake o te heke ngaru. He 1 haora te roa o te mahi.

- Tāruatia te tāruatanga matua 5E (whārangi 35). Tohaina kia kotahi ki ia ākonga.
- Pānuihia ngā kōrero.
- E ai ki ngā kōrero kua ahatia te mahi heke ngaru i roto i te wā?
- Ka waihangatia e tēnā, e tēnā o ngā ākonga tētahi mahi toi e whakaatu ana i te whanaketanga o te heke ngaru ki Hawai'i. Mā te pouako anō te momo mahi toi e whiriwhiri, e whakarite.

He Aromatawai

Kua akohia ētahi whakataukī nō Hawai'i e whakaatu ana i te uara o te he'e nalu ki ngā tāngata whenua o Hawai'i.

Kua whakaaturia ngā uara rerekē o ētahi rōpū rerekē mō te kaupapa heke ngaru.

Kua rangahaua te hītori o te heke ngaru e mārama ai ngā ākonga ki ngā whakarerekētanga i roto i te wā, ā, kua whakaatungia ēnei māramatanga.

He Rauemi

Surfing: A History of the Ancient Hawaiian Sport
J.D. Houston & B.R. Finney, rev. ed. (1996)

Encyclopedia of Surfing
Matt Warshaw, Harcourt (2003)

Te Tuaiwi Tikanga ā Iwi

Mahere Ako	He Tirohanga Whānui	He Puia, he Iwi	Whenu
1 Mā Pango, Mā Whero	Ka tirohia ngā tūranga me ngā haepapa o te tangata i roto i ana mahi whakatutuki kaupapa nui.	Nākoloikalani whiti 8–12, whārangi 8–12	Te Whakarite Pāpori, taumata 4, whārangi 38–39
2 Te Piko o te Māhuri	Ka kawea e te meleoli te reo tuku iho ki te taringa. Ka kawea e te hula te reo tuku iho ki te mata. Ka kawea e te ōlelo no'eau te reo tuku iho ki te hinengaro. Ka ora ko te wairua.	Nākoloikalani whiti 1–16, whārangi 1–16	Te Ahurea me te Tuku Ihotanga, taumata 3, whārangi 54–55
3 Hokia ki Ō Maunga	Ka āta tirohia te maunga me tōna mana ki ngā iwi e noho nei i tōna taiao.	Nākoloikalani whiti 1–16, whārangi 1–16	Te Wāhi me te Taiao, taumata 3–4, whārangi 91–95
4 He Pahu na Alī'i	Ka tūhuratia e te ākonga ngā wāhi puia. Ko ngā puia ora o Hawai'i ētahi, ko Tarawera anō tētehi.	Nākoloikalani whiti 1–16, whārangi 1–16	Te Ao Hurihuri, taumata 4, whārangi 74–75
5 Kia Ngākau Māhaki	Ka rangahaua, ka wānangahia hoki ngā āhuatanga e pā ana ki tēnei mahi te heke ngaru, mai i mua tae mai ki ināianei. He mahinga ohaoha te heke ngaru ki Hawai'i, nā te mea ko te heke ngaru tētahi hākinakina rongonui puta noa i te ao, ā, kāore i kō mai, i kō atu i ngā ngaru o Hawai'i.	Nākoloikalani whiti 1–16, whārangi 1–16	Ngā Rawa me ngā Mahinga Ohaoha, taumata 4, whārangi 113–114

Whāinga Mātāmua	Whāinga Paetae	Tukanga
<p>I roto i te akoranga o Te Whakarite Pāpori ka mārama te ākonga ki:</p> <ul style="list-style-type: none"> • ngā take me ngā huarahi e whakarite ai te tangata i a ia anō ki te whakatutuki i ōna matea; • ngā motika, ngā tūranga me ngā haepapatanga o te tangata i a ia e pāhekoheko ana i waenga rōpū. 	<p>Ka taea e te ākonga te whakaatu i ōna mōhiotanga me ōna māramatanga ki:</p> <ul style="list-style-type: none"> • te whakaritenga a te tangata i a ia anō, hei urupare ki te mātātaki, ki te mōrearea. 	<p>Te Whakatau Kaupapa Pāpori, taumata 3–4, mata 2</p>
<p>I roto i te akoranga o ngā whenu ka mārama te ākonga ki:</p> <ul style="list-style-type: none"> • te whai wāhitanga o te ahurea me te tuku ihotanga ki te tuakiri o te tangata; • te āhua me ngā rokohanga o te pahekotanga ahurea. 	<p>Ka taea e te ākonga te whakaatu i ōna mōhiotanga me ōna māramatanga ki:</p> <ul style="list-style-type: none"> • te rerekētanga o ngā mahi a ngā rōpū ahurea, ahakoa e whakaata tonu ana ēnei i ētahi pūtake ōrite. 	<p>Te Pakirehua, taumata 3–4, mata 1 Te Tūhuratanga Uara, taumata 3–4, mata 2</p>
<p>I roto i te akoranga o ngā whenu ka mārama te ākonga ki:</p> <ul style="list-style-type: none"> • ngā pahekotanga o te tangata ki te wāhi me te taiao; • ngā huarahi e whakaatu ai, e whakamāori ai te tangata i te wāhi me te taiao. 	<p>Ka taea e te ākonga te whakaatu i ōna mōhiotanga me ōna māramatanga ki:</p> <ul style="list-style-type: none"> • te take me ngā huarahi e whakaatu ai te tangata i tōna hononga ki tētahi tino wāhi, ki tētahi tino taiao. • te whakaatatanga o te wāhi i ngā pahekotanga o te tangata ki te taiao i te wā o mua. 	<p>Te Pakirehua, taumata 3–4, mata 2, 3, 4</p>
<p>I roto i te akoranga o ngā whenu ka mārama te ākonga ki:</p> <ul style="list-style-type: none"> • ngā pānga i waenga i te tangata me ngā tūāhua o roto i te wā. 	<p>Ka taea e te ākonga te whakaatu i ōna mōhiotanga me ōna māramatanga ki:</p> <ul style="list-style-type: none"> • te waihangatanga a ngā pūtaketanga me ngā otinga tūāhua i te oranga o te tāngata. 	<p>Te Whakatau Kaupapa Pāpori, taumata 3–4, 1, 3</p>
<p>I roto i te akoranga o ngā whenu, ka mārama te ākonga ki:</p> <ul style="list-style-type: none"> • te take me ngā huarahi e uara ai, e whanake ai te tangata i ngā rawa; • te take me ngā huarahi e whakauru ai te tangata ki ngā mahinga ohaoha. 	<p>Ka taea e te ākonga te whakaatu i ōna mōhiotanga me ōna māramatanga ki:</p> <ul style="list-style-type: none"> • te take me ngā huarahi e rerekē ai te titiro me te whakamahi a te tangata i te rawa me te rokohanga o ēnei āhuatanga. 	<p>Te Tūhuratanga Uara, taumata 3–4, mata 1–3</p>



Moemoeaali'i	tāne	matua tāne
Haumea	wahine	matua wahine
Kamohoali'i	tāne	wāhi tamomo
Kānehekili	tāne	waha
Kauilanuimākēhāikalani	tāne	karu
Kūha'imoana	tāne	taringa
Kānemilohai	tāne	kapu ringa matau
Leho	tāne	monamona
Kāneikōkala	tāne	matimati
Kāne'āpua	tāne	kāore e mohiotia
Namakaokaha'i	wahine	poho
Pelehonuamea	wahine	puta
Kapo'ulakīna'u	wahine	pona
Kapōkohehele	wahine	rekereke
Hi'iakakalukalu	wahine	matiwae
Hi'iakakuilei	wahine	waewae
Hi'iakaikapoliopele	wahine	kapu ringa mauī



Ingoa	Mahi Āwhina
Kahoaka	Ko tāna, he kawē i te ahi puia o Pele mā raro i te whenua ki Aokealoa, ki a Nākoloikalani.
Kapupū	Ko tāna, he kawē i ngā waiariki o Pele mā raro i te whenua ki Aokealoa, ki a Nākoloikalani.
Pelehonuamea	Ko tāna, he tohutohu. Ko ia te mana whakahaere, kaipupuri i te ahi tapu.
Kamohoali'i	Ko tāna, he ārahi i te tira ki Aokealoa. Ka huri tōna āhua hei mako.
Kāne'āpua	Ko tāna, he whakaoho i a Pele. Ka kawē hoki ia i ngā kōrero a Pele ki te hui.
Kapō'ulakīna'u	Ko tāna, he rūrū i ōna parirau kia tīmata ngā mahi wairua e ora ake ai a Nākoloikalani.
Pu'ulena	Ko tāna, he hiki i te tinana o Nākoloikalani, ki roto i te waiariki o 'Ekekahi mā te pupuhi i tana hau pungatara.
Kapō-wahine-o-ka-malama (Uli)	Ko tāna, he hiki i te pō, kia whānau mai anō te awatea.
Hī'iakaikapoliopole	Ko tāna, he pupuri i a Tamānui-te-rā kia mutu rawa ngā mahi wairua o te po.
Haumea	Ko tāna, he whakamahana anō i te tinana mātao o Nākoloikalani ki roto i ana wai āhuru mōwai.



He Tukanga Whakahaere Hui

- Whiriwhiria mā wai ēnei haepapa e kawe:
 - te kaiwhakahaere
 - te kaituhi kōrero
 - te kaitiaki wā
 - te māngai
- Whakatau i ēnei take i mua i te tīmatanga o te hui:
 - te roanga o te hui
 - ngā take ka matapakia
 - te wā ki ia take
- Whakakīia te tūtohi nei:

<i>Te kaupapa o te hui</i>			
<i>Te rā me te wā o te hui</i>			
<i>Te roa o te hui</i>			
<i>Ngā tāngata i te hui</i>			
<i>Te take</i>			
<i>Te wā</i>			
<i>Te whakatau</i>			
<i>He aha te mahi?</i>			
<i>Mā wai e mahi?</i>			
<i>Āhea oti ai?</i>			



‘Eō, ‘O Pele-honua-mea



Eō, ‘O Pele-honua-mea

‘O Hulinu‘u ke ahi ‘ā loa naueue Tahiti

Ho‘ohāku‘i nei nākolo ka leo o pōhaku

Kawewe ‘u‘ina ka ua maka o ka uila

Nākolo nākeke i ka mole ‘o Ho‘okumuhonua

‘Ōlapa ke ahi, kūlapa ke kai

Ho‘ē‘e ke kai a Pele haki nu‘anu‘a i ka moana

Ke ka‘apuni e Pele-honua-mea e ke‘ehi ‘ia

Kuhia i o‘u pōki‘i lā

I ka ‘ale ī, ka ‘ale moe

Ko hiamoe kapu e Pele ē

E ala e Mihakalani, Mihakahonua

Halo pā‘eli‘eli kau mai ā

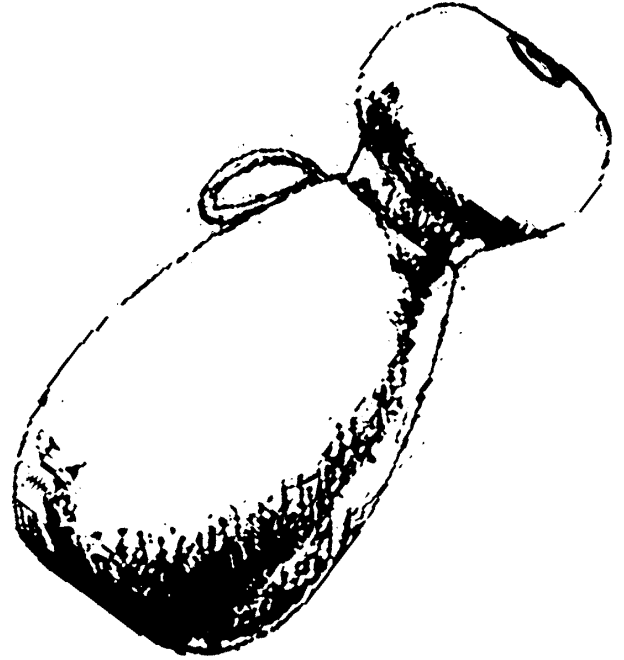
‘O Pele ke ahi ‘ā loa e ola



He Ipu Heke

Ka hiahiatia

ngā poi hau e 2	he kutikuti
he ngongo pvc 1cm te roa	he niupepa
he tēpa whakapiri	he wai kāpia pakitara
he huruhuru manu	he miro
he peita (<i>he mā, pango, kōwhai, parauri ngā tae</i>)	



He tohutohu

1. Pūhia ngā poi hau e rua ki te hau kia nui ake tētahi i tētahi.
2. Tēparahia ngā ngutu o ngā poi hau ki ngā moka e rua o te ngongo pvc. Ko te poi hau nui ki raro, ko te poi hau iti ki runga.
3. Whāia ngā tohutohu o te pākete ki te mahi mai i te wai kāpia pakitara.
4. Takaia katoatia te poi hau o raro me te ngongo pvc ki ngā maramara niupepa me te wai kāpia.
5. Takaia te nuinga o te poi hau o runga ki te niupepa me te wai kāpia, engari waiho tētahi wāhanga o runga ake kia wātea mai. Tirohia te pikitia hei tauira.
6. Waiho ngā poi hau kia maroke.
7. Peitahia ngā poi hau kia rite ki ngā tae o te ipu heke.
8. Herea te miro me ngā huruhuru manu ki te kakī o te ipu heke, hei whakapaipai i tō taonga puoro.



Ngā Whakataukī

Ahi Ahi	‘Āina Whenua	Hula Haka	Manawa Le‘a Manaakitanga
<i>‘A‘ole e ‘ole e ‘ōlelo mai ke ahi ua ana ia.</i>	<i>‘A‘ohe ola ka ‘āina i ke ali‘i haipule ‘ole.</i>	<i>Kuhi no ka lima, hele no ka maka.</i>	<i>He ‘ōpū hālau.</i>
E kore rawa te ahi e kī ake kua ngata tana hiahia. (Ka kā tonu te ahi o te aroha me te riri.)	Kāore te whenua e ora i te rangatira whakapono kore.	Ahakoā rere te ringa ki hea, ki reira anō ngā mata.	Me he whare te kōpū. (He kōrero mō te tangata marae.)
<i>Hele huhū ke ahi me ka momoku.</i>	<i>Hānau ka ‘āina, hānau ke ali‘i, hānau ke kanaka.</i>	<i>I le‘a ka hula i ka ho‘opa‘a.</i>	<i>E hea i ke kanaka e komo maloko e hānai ai a hewa ka waha.</i>
He riri anō tō te ahi me te mōmotu. (He kōrero mō te uira me te whatitiri.)	Ka whānau tahi mai te ariki, te whenua me te tangata.	Nā te pahū te hula i reka ai.	Karangahia te tangata kia kuhu mai, ka whāngai kia pakaru ngā hamuti.



Te Hanga Puia

Ka hiahiatia

he waea heihei	he niupepa	he wai kāpia
he peita	he kōhatu itiiti	he pātara
he ngongo	he winika parauri	he tēpa whakapiri
he paura hōuru konutai		

1. Ko te waea heihei hei hanga i te āhua o te maunga. Kia hāwhe mita o te waea heihei mō ia puia.
2. Hangaia te puia kia taea ai te whakatū pounamu 500mL te rahi ki roto.
3. Tapahia ētahi kōhao e rua ki ngā taha o te pounamu kia whakaurungia atu ai ētahi ngongo. Āta whakamaua ngā ngongo ki te pounamu mā te tēpa whakapiri. (Ko te kakī o te pounamu me ngā kōhao e rua ngā wāhi e puta ai te rangitoto.)
4. Whakatūria te pounamu ki raro i te puia, kia pā ngā ngongo ki te waea heihei.
5. Uhia te puia ki ngā maramara niupepa kua pania ki te wai kāpia. Waiho ngā wāhi kei reira te kakī o te pounamu me ngā ngongo kia wātea tonu.
6. Kia rua, kia toru pea ngā paparanga pepa, kia pai ai te mātotorutanga o te puia.
7. Kia maroke te niupepa, whakapiringia ngā whakapaipai – he kirikiri, he kōhatu, he aha, he aha. Me huna hoki ko ngā kōhao.
8. Peitangia: Tērā pea me kanohi te āhua, me papango katoa rānei. Tērā pea ia, he hukarere kei te tihi. Kei ia rōpū te tikanga.
9. Mō te whakapahū, tuatahi ka riringi he winika parauri ki roto i te pounamu. Kia 100mL te rahi.
10. Kātahi ka raua atu ki te pounamu te paura houru konutai – kia kotahi pune nui. E taea ana te taupoki mō tētahi wā kia kaha ake te pahūtanga.



Ngā Puia

Anei ngā āhuatanga ka pā mai ki te tangata:

- Te rere o te totorewa
- Te pahū nui
- Te rū whenua
- Te tai-āniwhaniwha
- Te hauhā pungatara
- Te para whakaruamoko
- Te uakawa

Ngā Moutere me ngā Puia o Hawai'i

He kāhui moutere a Hawai'i. Ko te motu o Hawai'i te motu nui o ngā moutere e waru. Koia ērā ko Hawai'i, ko Nī'ihau, ko Kaua'i, ko O'ahu, ko Moloka'i, ko Maui, ko Lanai, ā, ko Kaho'olawe. E ai ki ngā kaupūtaiao, i whānau puia mai ēnei moutere katoa. Heoi anō kua matemate te nuinga o ngā puia o Hawai'i, hāunga ko ērā kei Maui me Hawai'i. Kua kitea hoki e te hunga pūtaiao tētahi puia e tupu tonu ana i te takere o Te Moana-nui-a-Kiwa, ā, ko Lo'ihi, tana ingoa. Kotahi mano mita i raro i te wai tōna nohoanga! Ka tū whenua mai a Lo'ihi i tana putanga ake i te moana hei ngā tau manomano kei te heke mai. Nō reira, e rima ngā puia e ora tonu ana i Hawai'i, ko Lo'ihi, ko Haleakala (i te motu o Maui), ko Hualālai, ko Mauna Loa, ko Kīlauea (i te motu o Hawai'i).

A Mauna Loa

Ko Mauna Loa te puia nui katoa o te ao e ora tonu ana. Nō te tau 1984 tana pahūtanga nui i roto i ngā tau rua mano. He toru wiki te roa o taua pahūtanga, ā, i tata atu te awa totorewa ki Hilo (te tāone nui o te motu). I te pahūtanga o Mauna Loa, i puta te totorewa i te raki-mā-whiti o te maunga, ka rere iho ki Hilo e tū tawhiti ana i Mauna Loa. Heoi anō, me

Te Pāhoehoe me te 'A'ā

He Pāhoehoe



He 'A'ā



i puta mai te totorewa i te tonga-mā-uru kē, kua tino kino rawa atu, nō te mea he tokomaha ake ngā tāngata e noho ana ki taua rohe.

A Kīlauea

Ko Kīlauea te teina o te tokorua puia nei. Heoi anō, ka roa ake ngā pahūtanga o Kīlauea i ō Mauna Loa (mai i te tau 1983 ki te tau 1991). Kua turakina e ngā awa totorewa ngā wāhi noho, ngā whare me ngā rori matua i te tai tonga-mā-uru o Kīlauea. Kua tāpukengia ngā whare 181 me te 8 km o te tahatai.

He Kohinga Kōrero

I te pō o te 1 o Hōngongoi 1950, i ngā tāngata o Ho'okena-mauka e moe tonu ana, ka pahū mai a Mauna Loa. Totō mai ana te totorewa i ngā tini matore o Mauna Loa. I te kaha o te kupere mai, i roto i ngā haora e toru ka tae atu te totorewa ki te papakāinga o Ho'okena-mauka. Kainga ana ētahi whare me te poutāpeta o reira e te ahi. I te awatea, ka whakawhitia te rori matua e te totorewa, ā, ka aukatingia ngā putanga mō ngā tāngata. Engari i waimarie ngā tāngata, kāore tētahi i hinga, i mate rānei i taua pahūtanga.

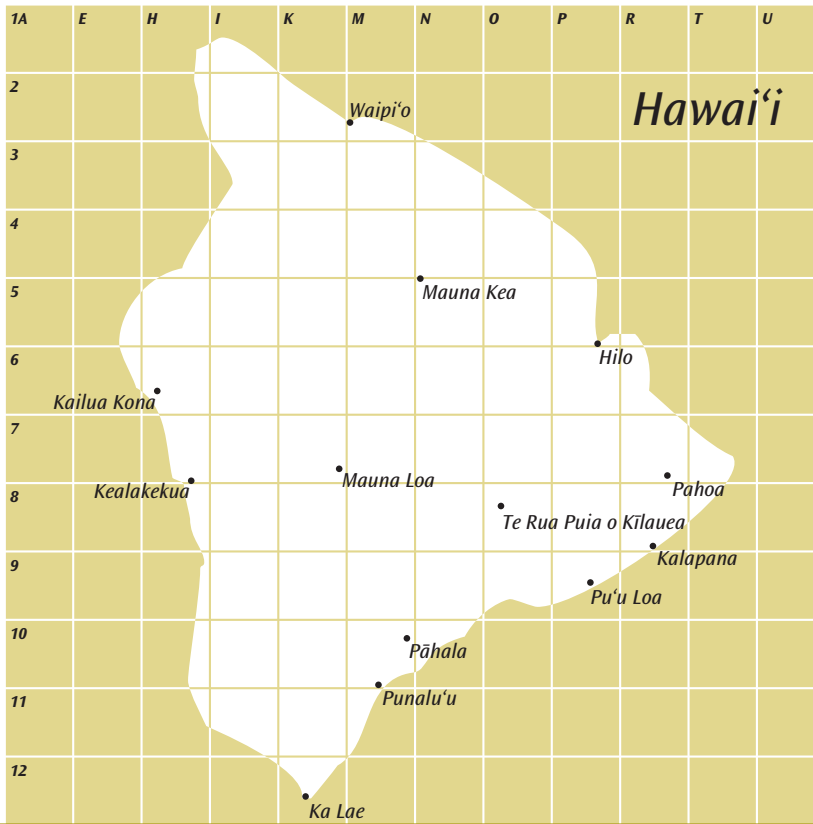
Ngā Āhuatanga Pai o te Puia

Nā te puia anō te whenua o Hawai'i i whakarahi ake kia 540 eka te nui. He nui hoki ngā mahi tāpoi kua puta ake i Hawai'i i ōna puia whakahirahira.

He māeneene, he mōhinuhinu te āhua o te pāhoehoe.

He tawhito, he mākini, he pungapunga pango te āhua o te 'a'ā.

Nō te totorewa ēnei tū kōhatu e rua.

**Te ingoa wāhi**

Waipi'o
Mauna Kea
Mauna Loa
Te Rua Puia o Kīlauea
Kalapana
Pu'u Loa
Ka Lae
Punalu'u
Pāhala
Kealakekua
Kailua Kona
Hilo
Pahoa

Te tau tohu wāhi

M 2
M 4
K 8
O 8
R 8
P 9
K 12
M 11
M 10
H 8
H 6
P 6
R 7



Te Pahūtanga o Tarawera

- He ohorere tonu te pahūtanga o Tarawera i te ata o te 10 o Pipiri 1886.
- I pōhēhētia kua korehāhā a Tarawera.
- I te pahūtanga o Tarawera i tuhaina ki te rangi tētahi kapua nui. He kapua pango, he kapua kī ana i te toka, i te pungarehu, i te tākohu hoki, i te (haurehu) paitini.
- Hoki rawa ki te whenua, he ua tātā kino, he parekura tonu te rite.
- I tāpukengia katoatia a Ōtūkapuarangi me Te Tarata. I taua wā ko ēnei ngā upane ngāwhā mīharo katoa puta noa i te ao.
- Ko Te Wairoa anō tērā i tāpukengia. He wāhi tāpoi rongonui tēnei i tērā wā.
- Kotahi rau e rima tekau mā toru ngā tāngata i mate.
- E ai ki ngā kaipūtaiao, neke atu i te 2,000,000,000 mita³ o te pungarehu i horaina ki wīwī, ki wāwā.

He Kōrero o Mua

I te ata o te 1 o Pipiri 1886, i ngā tūruhi e whakawhiti ana i te roto o Tarawera, i kitea tētahi āhuatanga rerekē. Mai i ngā kohu o te roto i puta ake tētahi waka tauā, he tauā anō i runga. Nā wai rā, ka ngaropoko te waka.

I te hokinga mai o ngā tūruhi ki Te Wairoa, i kōrerohia tō rātou kitenga. I reira tētahi tohunga, a Tuhoto. E ai ki te koroua rā, he waka wairua kē tērā i kitea, he tohu aituā nui.

I te ata tonu o te 10 o Pipiri, i whakaohongia ngā tāngata o Te Wairoa e tētahi rū whenua ririhau. Wāwāhingia te tihi o Tarawera, muramura ana te rangi!

I mua tata tonu i te rua karaka, kua pō te ao i te kapua nui.



He Whakataukī mō te Heke Ngaru

He taurira whakamāori i ngā whakataukī:

- i) He hokia ra (te) mea wāwāhi e te heke ngaru.
Ko tā te tauhou ki te heke ngaru, he takataka noa.
- ii) He pai te heke ngaru ki Tangaroa.
He wāhi pai rawa a Kahaloa mō te heke ngaru.
- iii) Ko Kawiri te ngaru. He ngaru tapu tai na te atua.
Ki te hara mai te ngaru 'Awili, he ngaru tapu nā te atua.

He taurira whakamārama i ngā whakataukī.

- i) He kōrero tēnei mō te tangata e ako tonu ana i tētahi pūkenga hou, kāore anō ia kia pakari.
Ka taka, ka tū ake, ka taka anō.
- ii) He wāhi rongonui a Kahaloa mō te pai o ngā ngaru kia hekea.
- iii) He ngaru kino te 'Awili. Ka kitea ana, ka mutu ngā mahi hoe waka me ngā mahi heke ngaru.
E ai ki ngā kōrero ko te atua, ko Pele, kei te heke ngaru i taua wā. Ko te wā o ngā atua kē te wā o te 'Awili.

Ko ngā whakatauki nei kei te whakaatu i ētahi āhuatanga o te hapori nā rātou ngā kōrero nei. He iwi moana rātou. I mōhio pai rātou ki ngā āhuatanga rerekē o ngā momo ngaru hoki. He mana nui tō Tangaroa me ōna ngaru o te moana. He mana nui hoki tō te mahi heke ngaru, he mahi a ngā atua.



Te Mahi Heke Ngaru

I te tīmatanga o te rautau rua tekau, he āhua 28% o ngā tāngata whenua o Hawai‘i i noho ki Waikiki. I Waikiki i te he‘e nalu tonu te ariki tapairu a Princess Kaiulani.

I te tau 1901 i tuwhera te hōtēra Moana Hotel i Waikiki. Tokomaha ngā tūruhi nō Amerika me Ōropi i te haere mai, i te mīharo hoki ki te āhukatanga o ngā ngaru o Waikiki.

Ko George Freeth tētahi tangata i āwhina i te aranga ake mai anō o te heke ngaru. E ai ki te kōrero, i pōwhiritia ia ki Redondo Beach i California, U.S.A. ki te tuwheratanga o te rerenga tereina o Huntington ki te whakaatu i tōna tohungatanga ki te heke ngaru. Koinei te wā tuatahi kua whakaatungia te hākinakina nei ki tētahi kaupapa ohaoha.

Ko Alexander Ford anō tētahi, nāna te Outrigger Club i whakatuwhera i te tau 1907 ki Waikiki. Ko tōna hiahia kia tae atu te tini me te mano ki Waikiki ki te hoe waka me te heke ngaru. Heoi anō rā mō te hunga Pākehā anake te wāhi nei.

I te tau 1905 i whakatūria te rōpū He Hui Nalu kia whakawhanake i te mahi heke ngaru ki waenganui i ngā tāngata whenua o Hawai‘i. I whai mana ai te rōpū nei i te tau 1911.

Kua puta te mahi heke ngaru ki te ao whānui. Kua kawea atu ki Ahitereiria e Duke Kahanamoku.

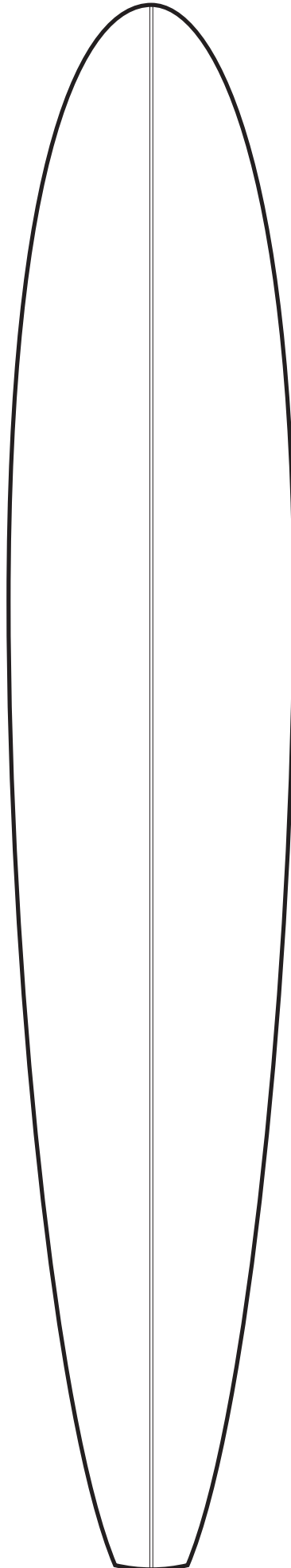
Anō hoki, kua whakaatungia e George Freeth rāua ko Duke Kahanamoku he mahi whakaahuru i te tangata i te moana te mahi heke ngaru. Nā rāua ētahi tāngata i te tata toromi i te moana i whakaora nā tō rāua kaha ki te he‘e nalu. Nā rāua hoki ngā papa heke ngaru i whakarerekē, i whakawhanake ao.

I ngā tau 1920 – i uru mai a Tom Blake ki te mahi hoahoa papa heke ngaru hou mō te hokohoko me te whakataetae te take. Nāna te ‘Hawaiian Hollow Surfboard’ i whakaputa mai ki te ao he‘e nalu i te tau 1928. I tāpirihia hoki e ia te tenenga o te urutira ki raro o te papa.

I hangaia te papa reti ngaru weu karaehe e Preston Peterson i te tau 1946.

Kua rerekē te mahi heke ngaru, me te momo tangata e mahi ana i roto i te hekenga o te wā. I tōna wā he mahi nā ngā atua ka mahia e ngā ariki o Hawai‘i. I tēnei wā he mahi mō te katoa, he ahumahinga whai rawa rongonui puta noa i te ao.

Tuhia tō ake hoahoa mō te papa reti ngaru nei.



Kupu Taka

<i>‘a‘ā</i>	lava, rough and old looking	<i>para whakaruamoko</i>	pyroclastic flow
<i>ahi puia</i>	volcanic fire	<i>parekura</i>	disaster
<i>ahurea</i>	culture	<i>paura hōuru konutai</i>	baking soda
<i>‘āina</i>	land	<i>pikau</i>	carry on one’s back
<i>awa totorewa</i>	lava flow	<i>poho</i>	bosom, chest
<i>haepapa</i>	responsibilities	<i>poi hau</i>	balloon
<i>hapori</i>	community	<i>pungarehu</i>	ashes
<i>hauhā pungatara</i>	sulphur dioxide	<i>puta</i>	vagina
<i>Haumea</i>	Papatūānuku	<i>pūtaketanga</i>	purpose
<i>Haunaloa</i>	Haungaroa	<i>rangitoto</i>	black lava
<i>hau pungatara</i>	sulphuric wind	<i>rautaki</i>	strategy
<i>haurehu</i>	wind carrying fine volcanic dust	<i>rekereke</i>	heel
<i>he‘e nalu</i>	surfing (Hawaiian)	<i>riri hau</i>	angry, violent
<i>heke ngaru</i>	surfing	<i>rokohanga</i>	be possible
<i>hula</i>	traditional Hawaiian dance form	<i>rū whenua</i>	earthquake
<i>ipu heke</i>	gourd drum (Hawaiian)	<i>tai-āniwhaniwha</i>	tidal wave
<i>kapu ringa</i>	palm of the hand	<i>taiao</i>	environment
<i>kōhao, kōwhao</i>	crater, hole	<i>takataka</i>	turn, roll from side to side
<i>kōpū</i>	womb, or beneath Earth’s surface	<i>tākohu</i>	enshrouded in mist
<i>kupere</i>	flow swiftly	<i>tangi</i>	melody
<i>māeneene</i>	smooth	<i>tāpoi</i>	tourism
<i>mākini</i>	jagged	<i>tāpukengia</i>	to flood
<i>mātātaki</i>	inspect, gaze at	<i>taukumekume</i>	debate
<i>matiwae</i>	toe	<i>Te Ahurea me Te Tuku Ihotanga</i>	Culture and Heritage
<i>matū</i>	gist	<i>Te Ao Hurihuri</i>	Time, Continuity and Change
<i>meleoli</i>	chant (Hawaiian)	<i>Te Pakirehua</i>	Inquiry
<i>mita</i>	tempo, rhythm	<i>Te Tūhurutanga Uara</i>	Values Explorations
<i>mōhinuhinu</i>	shiny, glistening	<i>Te Wāhi me te Taiao</i>	Place and Environment
<i>mōmotu</i>	firebrand	<i>tīrangohia</i>	scatter, mix up
<i>monamona</i>	knuckle, joint	<i>totorewa</i>	lava
<i>mōrearea</i>	exposed to great danger	<i>tuakiri</i>	identity
<i>motika</i>	rights	<i>tūruhi</i>	tourist
<i>Nākolokolani</i>	Ngātoroirangi	<i>uakawa</i>	acid rain
<i>Ngā Rawa me ngā Mahinga Ohaoha</i>	Resources and Economic Activities	<i>ua tātā</i>	heavy rain
<i>ngaropoko</i>	disappear, search	<i>‘Uīwai</i>	Kuiwai
<i>ngāwhā</i>	boiling spring	<i>ukalele</i>	small Hawaiian guitar (Hawaiian)
<i>ngongo</i>	tube	<i>upane</i>	abreast, in even rank
<i>ōlelo</i>	language (Hawaiian)	<i>urupare</i>	response
<i>ōlelo Hawai‘i</i>	Hawaiian language (Hawaiian)	<i>waea heihei</i>	chicken wire
<i>ōlelo no‘eau</i>	proverb (Hawaiian)	<i>wāhi tamomo</i>	fontanel
<i>oro</i>	sound	<i>wai kāpia pakitara</i>	wallpaper paste
<i>paearu</i>	criteria	<i>waiariki</i>	hot spring
<i>pāhoehoe</i>	smooth, shiny type of lava (Hawaiian)	<i>waihangatanga</i>	shaping
<i>pahū</i>	erupt	<i>waimiria</i>	soothing waters
<i>paitini</i>	pollution	<i>whakaemi</i>	gather together
<i>paparanga</i>	class	<i>whakamāori</i>	interpret
		<i>whakapahū</i>	make erupt
		<i>whakarite pāpori</i>	social organisation
		<i>whārangi meka</i>	fact sheet
		<i>winika parauri</i>	vinegar